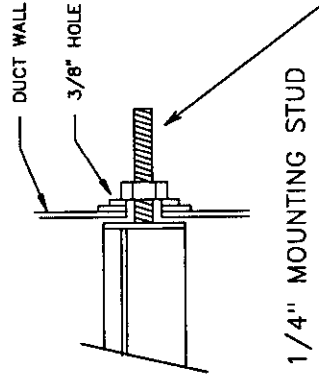
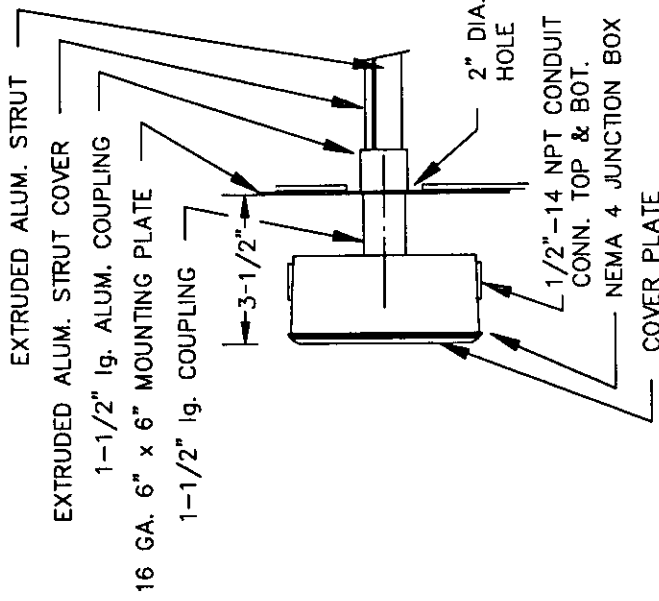
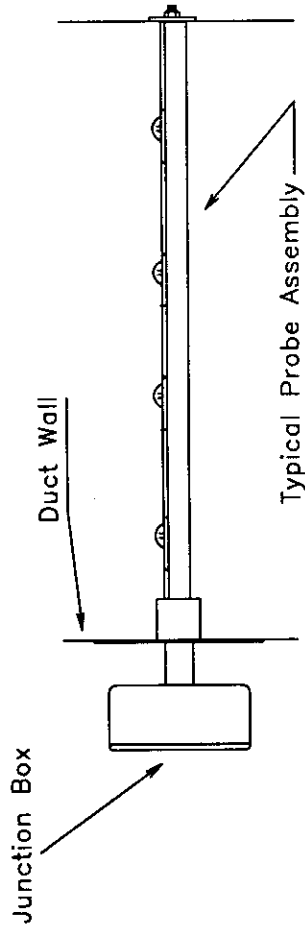


Model MI, NL, And ESP Strut Installation Instructions



1. Refer to the submittal drawings for details on the location and spacing of the probe assemblies.
2. Each probe assembly is tagged on the junction box cover. Be certain to match these tags to the system being installed as the probe assemblies are not interchangeable.
3. Cut a 2 inch diameter hole at the junction box side of the duct. Locate the center of the hole as indicated on the submittal drawings.
4. Drill a 3/8 inch diameter hole opposite the 2 inch hole on the same center. This step is not required on small ducts if the probe assembly is constructed without the 1/4 inch mounting stud (Single End Version).
5. Install a neoprene or other suitable gasket (not supplied) between the duct plate and the duct wall. DO NOT use silicone or other permanent adhesives. Maintenance may require periodic removal of the probe assembly for cleaning.
6. Remove hardware from the 1/4 inch threaded stud (if supplied).
7. Insert the probe assembly into the duct until the threaded stud goes through the 3/8 inch diameter hole. It may be helpful to install an access door near the flow station to simplify installation.
8. Attach the mounting plate to the duct wall with 4 self tapping screws. Be certain that the probe assembly is correctly oriented with the direction of airflow in the duct. Install the hardware on the 1/4 inch stud and tighten.
9. Wire the probe assemblies as indicated in the wiring diagram.



FLOW MEASUREMENT TECHNOLOGIES INC.
 RR # 3, Box 3094, Lehighton, PA 18235
 101 Amber Street, Unit 21, Markham, Ontario L3R3B2

Date:	6/9/93	MODEL	2131
Drawn by:	HH	MI/SP	
Scale:	NTS		D344