

MODEL CI INSTALLATION INSTRUCTIONS

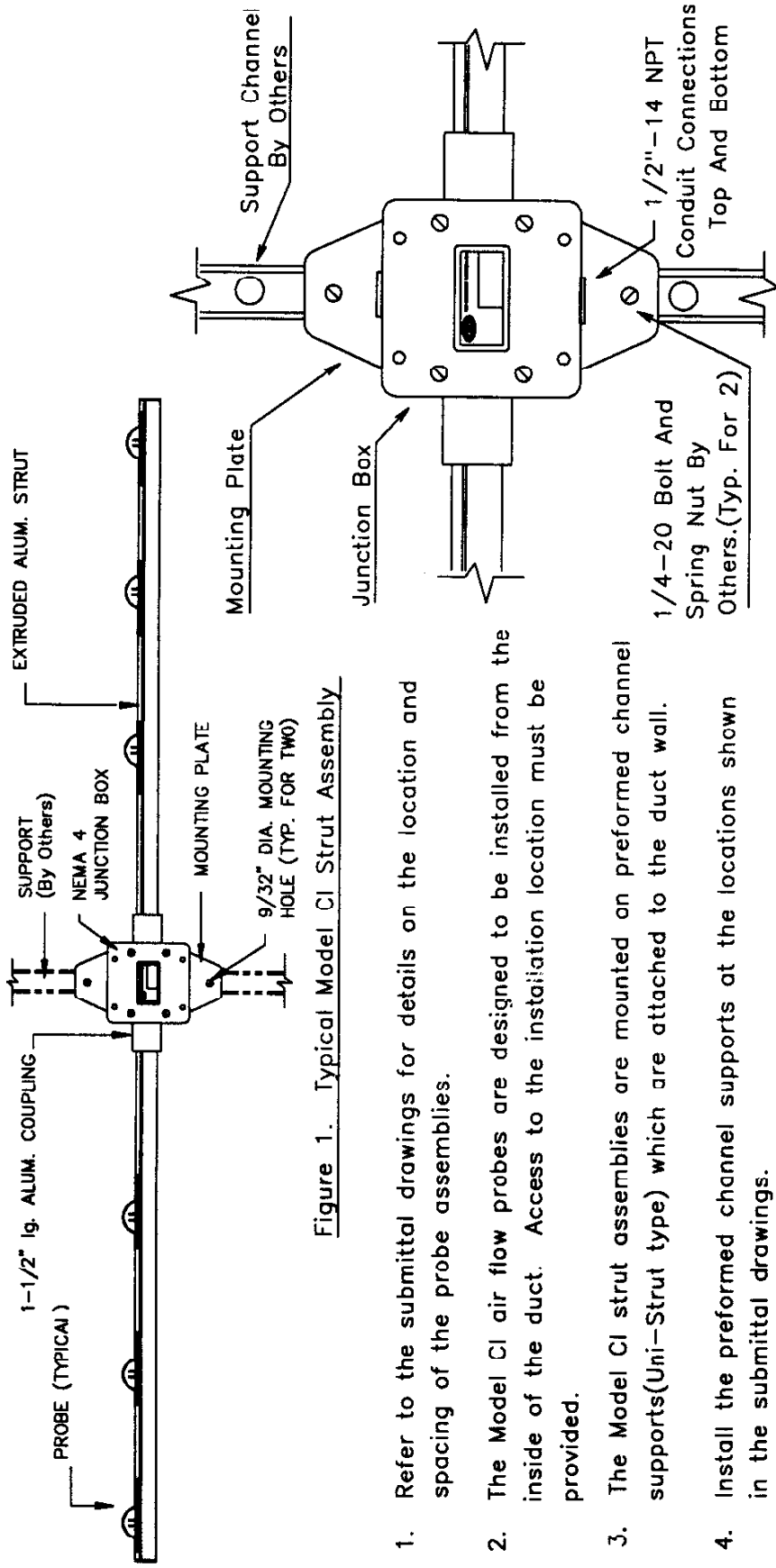


Figure 1. Typical Model CI Strut Assembly

Figure 2. Mounting Detail

1. Refer to the submittal drawings for details on the location and spacing of the probe assemblies.
2. The Model CI air flow probes are designed to be installed from the inside of the duct. Access to the installation location must be provided.
3. The Model CI strut assemblies are mounted on preformed channel supports(Uni-Strut type) which are attached to the duct wall.
4. Install the preformed channel supports at the locations shown in the submittal drawings.
5. Attach the Model CI probe assemblies to the support struts with 2 sets of standard 1/4" spring nuts and bolts. Adjust the vertical position of the probe assemblies to achieve the spacing as shown in the submittal drawings. Tighten the mounting bolts when all probe assemblies are properly spaced.
6. Wire the probe assemblies to the output transmitter as shown in the transmitter wiring diagram. All wiring should be run in conduit. Each junction box has 2 1/2" NPT conduit connections.



FLOW MEASUREMENT TECHNOLOGIES INC.
 RR # 3, Box 3094, Leighton, PA 18235
 101 Amber Street, Unit 21, Markham, Ontario L3R3B2

Date:	1/22/92	MODEL	2131
Drawn by:	GB	CI	
Scale:	NTS		D350