



MODEL LP AIR FLOW STATIONS

Flow Measurement Technologies Inc.

Proven Technology Since 1985

LP1106

Flow Measurement Technologies Inc. offers the Model LP electronic airflow measurement station for use in small HVAC ductwork. The Model LP is factory assembled and wired, ready to be inserted into the ductwork. The installer provides 24VDC power and then connect it to the control system and the flow station is ready to operate.

Applications For the Model NL

- Variable Volume Monitoring
- Highly Accurate Flow Stations
- Zone Duct Control
- Outside Air Intakes
- Exhaust Air Systems
- Fan Tracking
- Small Ductwork



Features

- Solid-state electronics
- Field Replaceable Sensors
- Stainless Steel Sensing Elements
- Thermal Sensing Probes
- Wide Range of Flow
- Factory Calibrated
- One or Two Sensors On One Strut
- Strut Is Factory Wired
- Low Energy Consumption
- Robust Construction
- NEMA 4 Electronic Enclosure
- Installs in Minutes
- Available with Struts installed in Steel or Aluminum Casing

Ordering Data

Model LP 1 x

Number of Struts: Max (1)

Number of sensors per strut: Max (2)

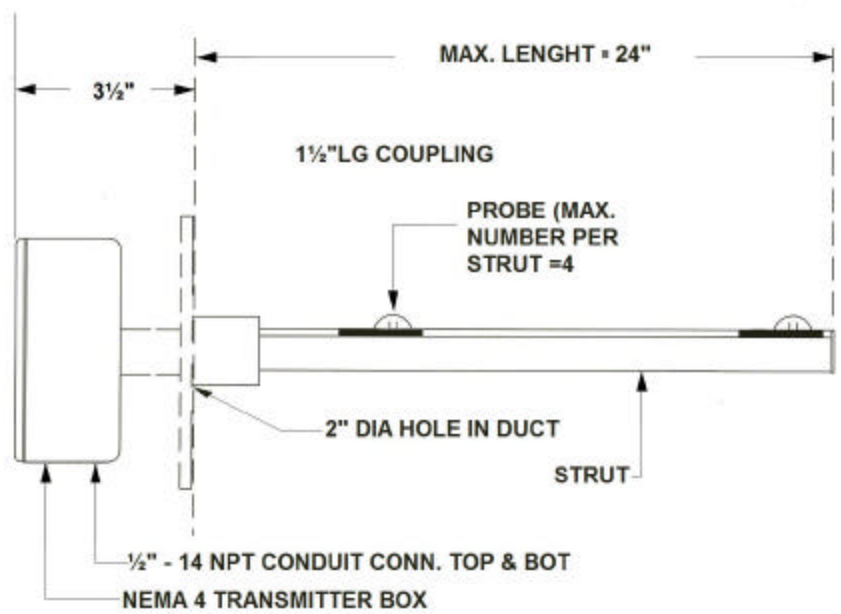
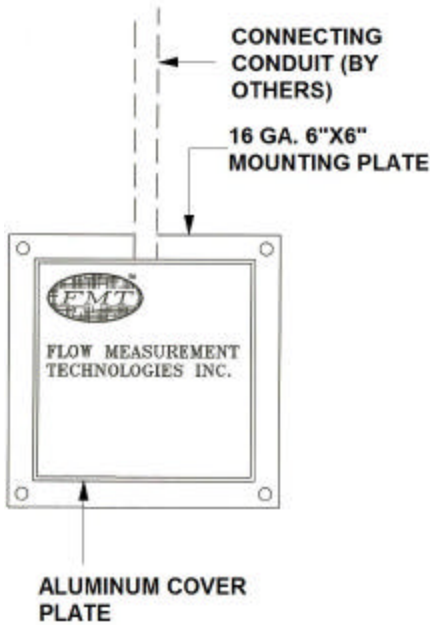
Design Air Flow: (CFM _____) (m/s _____)

Output: (0-5 _____), (0-10vdc _____), (4-20 mA _____)

Duct Size (IP _____), (SI _____): _____ H x _____ W or Diameter: _____

TECHNICAL SPECIFICATIONS

OUTPUT:	LINEAR
ACCURACY:	+/- 2% OF READING +/- 1/2% OF FS
REPEATABILITY:	+/- 1/2%
PRESSURE DROP:	LESS THEN .01" w.c. @ 5000 FPM BASED ON 1 SENSOR PER SUARE FOOT
OPERATING TEMPERATURE RANGE	
STANDARD:	0° to 150°F
OPTIONAL:	-40° TO 120°F
OPERATING HUMIDITY RANGE:	0-99% RH
VELOCITY RANGE:	0-5000 FPM
RESPONSE TIME:	100MS
OUTPUT:	0-5vdc, 0-10vdc or 4-20Ma
INPUT POWER:	24 VDC 8 Watts Maximum (2 Probe System)
SUPPORT STRUT:	ALUMINUM
VELOCITY SENSOR:	304 STAINLESS STEEL
TEMPERATURE SENSOR:	304 STAINLESS STEEL
PROBES:	TEMPERATURE COMPENSATED, FIELD REPLACEABLE & CLEANABLE
WARRANTY:	2 YEARS, ALL PARTS

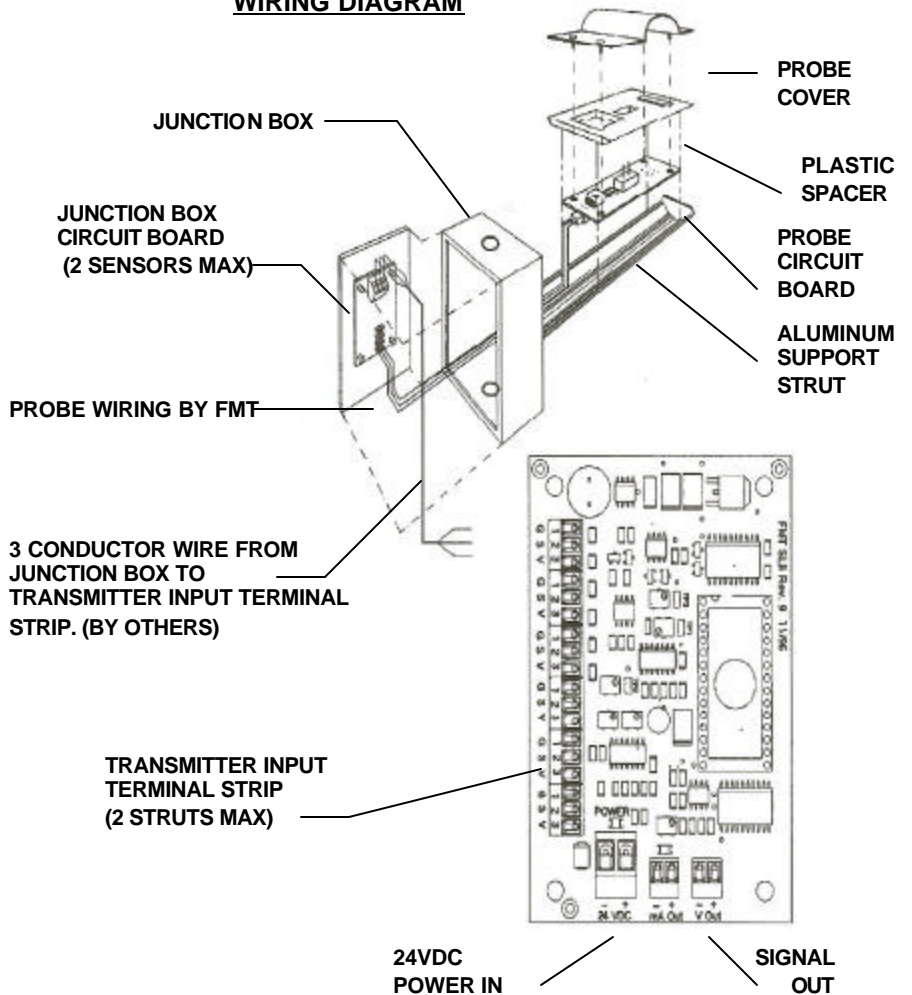


LP STRUT ASSEMBLY (MAX NUMBER PER STATION = 1)

MATERIAL SPECIFICATION

- > VELOCITY SENSOR: 304 STAINLESS STEEL
- > TEMPERATURE SENSOR: 304 STAINLESS STEEL
- > PROBES: TEMPERATURE COMPENSATED, FIELD REPLACEABLE & CLEANABLE
- > ELECTRICAL ENCLOSURE: TYPE A, WEATHER PROOF, ALUMINUM, UL & CSA LISTED
- > MOUNTING PLATE: 16 GA. GALVANIZED STEEL
- > SUPPORT STRUT: EXTRUDED ALUMINUM MILL FINISH. OPTIONAL: STAINLESS STEEL

WIRING DIAGRAM



Transmitter With Optional Display

