



MODEL CI AIR FLOW STATIONS

Flow Measurement Technologies Inc.

Proven Technology Since 1985

C1108

Flow Measurement Technologies Inc. offers the Model CI electronic airflow measurement station for use in Air Handling Units. The Model CI is factory assembled and wired, ready to be installed into an air handler or large duct. The installer must wire from strut to strut, provide 24VDC power and then connect to the control system and the flow station is ready to operate.

We now supply all of our air flow measuring stations with the True Linear Averaging (TLA) system. Each individual flow sensor signal is linearized through the use of high speed digital circuitry and then equally weighted and averaged with all other sensors in the flow station. The result is a true average of the velocity profile of the duct.

Making this possible is the unique FMT thermal flow sensor. Unlike some others in the flow measurement industry, all FMT sensors are flow matched which has 2 distinct advantages:

- 1. Since all sensors within a flow station are identical, linearization and averaging are greatly simplified.*
- 2. Matched sensors allow field replacement of a defective or damaged sensor without replacing the entire probe assembly.*

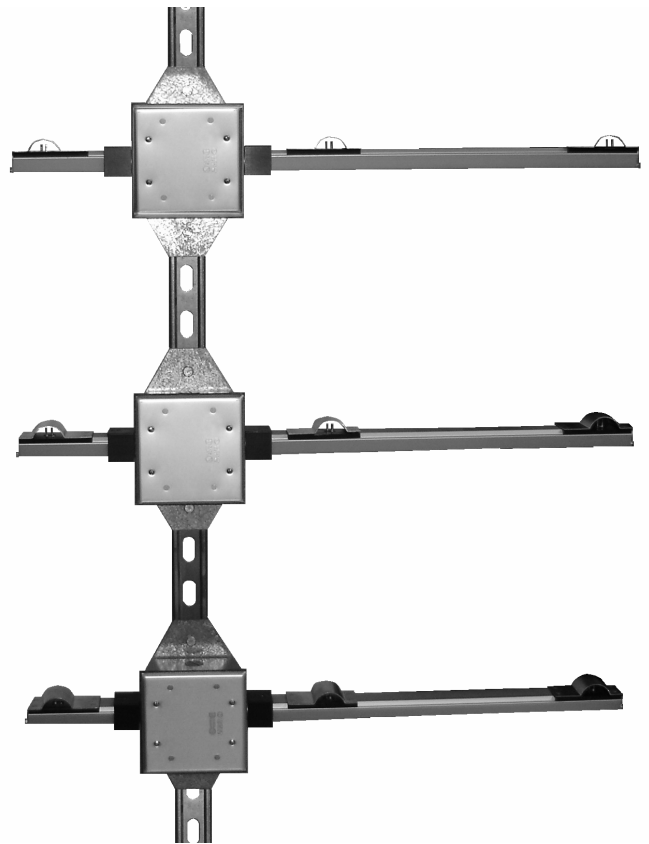
Our new TLA system can handle up to 4 struts with 8 sensors on each strut resulting in greater accuracy of the flow station

Applications For the Model NL

- Variable Volume Monitoring
- Highly Accurate Flow Stations
- Outside Air Intakes
- Exhaust Air Systems
- Fan Tracking
- Large Air Handlers or Large Ducts

Features

- Field Replaceable Sensors
- Stainless Steel Sensing Elements
- Thermal Sensing Probes
- NIST Traceable Calibration
- Factory Calibrated
- Thirty Two Sensors On Four Struts
- Each Strut Is Factory Wired
- Low Energy Consumption
- Robust Construction
- NEMA 4 Electronic Enclosure
- Installs in Minutes
- Remote Transmitter
- Mounts and Supports Supplied by Installing Contractor (Not Supplied By FMT)



CI 3x3

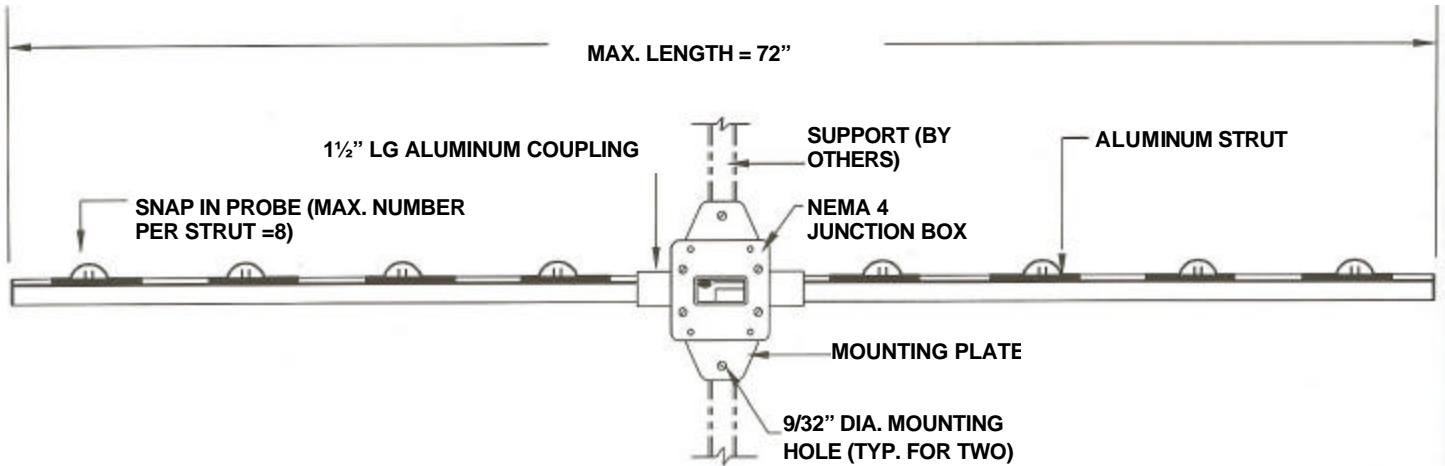
TECHNICAL SPECIFICATIONS

OUTPUT:	LINEAR
ACCURACY:	+/- 2% OF READING
REPEATABILITY:	+/- 1/2%
PRESSURE DROP:	LESS THEN .01" W.C. @ 5000 FPM BASED ON 1 SENSOR PER SUARE FOOT
OPERATING TEMPERATURE RANGE	
STANDARD:	0° to 150°F
OPTIONAL:	-40° TO 120°F
OPERATING HUMIDITY RANGE:	0-99% RH
VELOCITY RANGE:	0-5000 FPM
RESPONSE TIME:	100MS
OUTPUT:	0-5vdc, 0-10vdc or 4-20Ma
INPUT POWER:	24 VDC 15 Watts Maximum (4 Probe System)
WARRANTY:	2 YEAR, ALL PARTS

1464 LOWER NIS HOLLOW DRIVE – LEHIGHTON, PA 18235 Tel: (610) 377- 6050 Fax: (610) 377-2658

<http://www.flowmeasurement.com/>

sales@flowmeasurement.com



CI STRUT ASSEMBLY (MAX NUMBER PER STATION = 4)

MATERIAL SPECIFICATION

- > VELOCITY SENSOR: 304 STAINLESS STEEL
- > TEMPERATURE SENSOR: 304 STAINLESS STEEL
- > PROBES: TEMPERATURE COMPENSATED, FIELD REPLACEABLE & CLEANABLE
- > ELECTRICAL ENCLOSURE: TYPE A, WEATHER PROOF, ALUMINUM, UL & CSA LISTED
- > MOUNTING PLATE: 16 GA. GALVANIZED STEEL
- > SUPPORT STRUT: EXTRUDED ALUMINUM MILL FINISH



Remote Transmitter with Optional Display

WIRING DIAGRAM

